

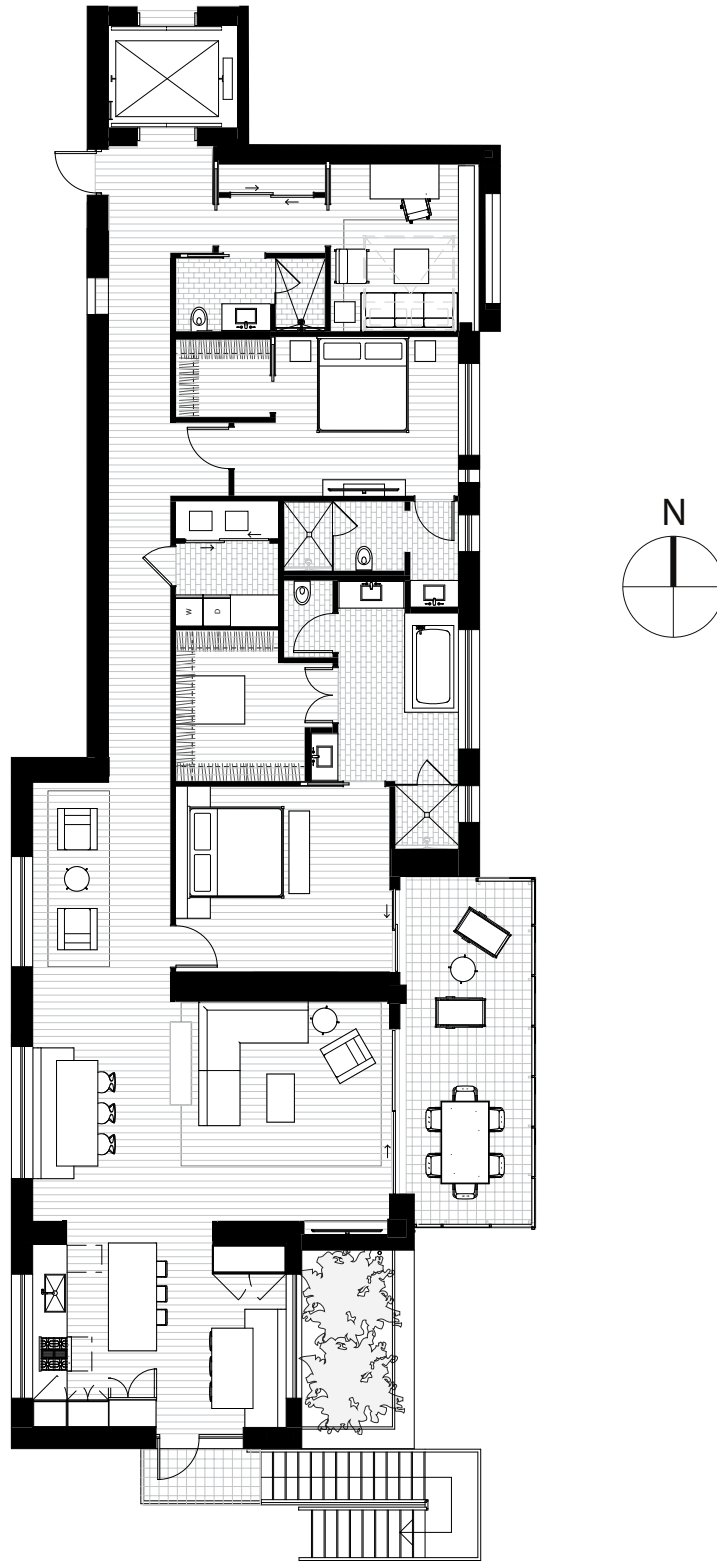
NOIR COLOR SCHEME

Saint Cecilia Residence 301

1,890 SF (INTERIOR) + 525 SF (TERRACE) | 2 BEDROOMS, 2 BATHS



Exclusive Sales & Marketing by DEN Property Group LLC. The materials, designs, square footages, features and amenities depicted by artist's or computer rendering are subject to change and no guarantee is made that the project or the condominium units will be of the same size or nature as depicted or described. Floor plans are not to scale, dimensions are approximate, and may vary from the description of the unit in the condominium declaration. Materials are based on photographic representation and are illustrative. You should review the actual materials at the sales office prior to making your finish selections. Furnishings shown in the photographs are not included. Certain images are based on photos or digital representations and have been artistically assembled and/or retouched. Views may change based on development or other factors. Changes may be made in the building or designs used in the project. The materials, designs, features and amenities depicted by artistic or computer renderings are subject to change. Pricing and availability are subject to change without notice. For information about brokerage services and consumer protection notice, visit <https://goo.gl/ZDjb8c>



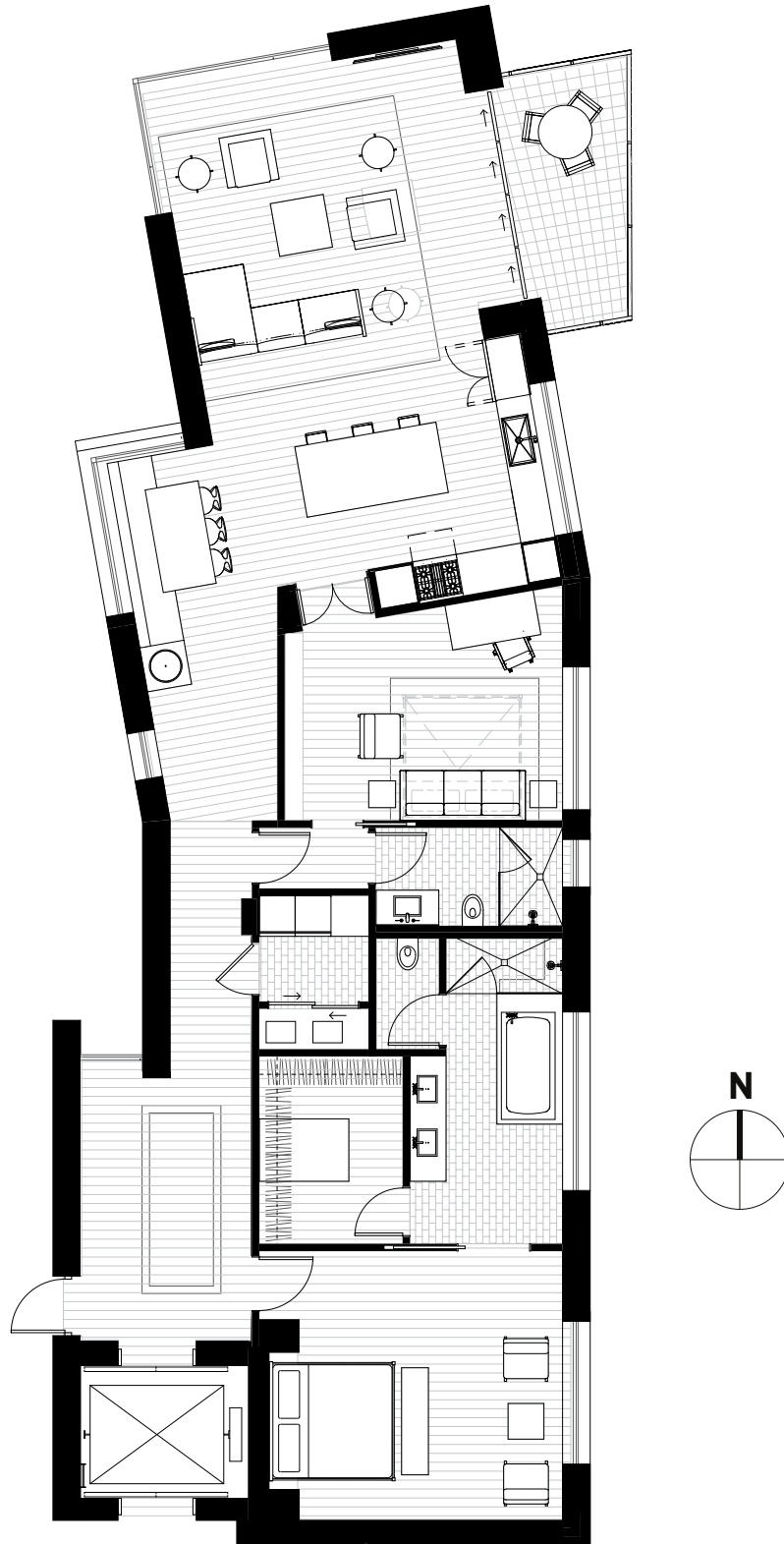
PISCINE COLOR SCHEME

Saint Cecilia Residence 302

2,440 SF (INTERIOR) + 270 SF (TERRACE) | 3 BEDROOMS, 3 BATHS



Exclusive Sales & Marketing by DEN Property Group LLC. The materials, designs, square footages, features and amenities depicted by artist's or computer rendering are subject to change and no guarantee is made that the project or the condominium units will be of the same size or nature as depicted or described. Floor plans are not to scale, dimensions are approximate, and may vary from the description of the unit in the condominium declaration. Materials are based on photographic representation and are illustrative. You should review the actual materials at the sales office prior to making your finish selections. Furnishings shown in the photographs are not included. Certain images are based on photos or digital representations and have been artistically assembled and/or retouched. Views may change based on development or other factors. Changes may be made in the building or designs used in the project. The materials, designs, features and amenities depicted by artistic or computer renderings are subject to change. Pricing and availability are subject to change without notice. For information about brokerage services and consumer protection notice, visit <https://goo.gl/ZDjb8c>



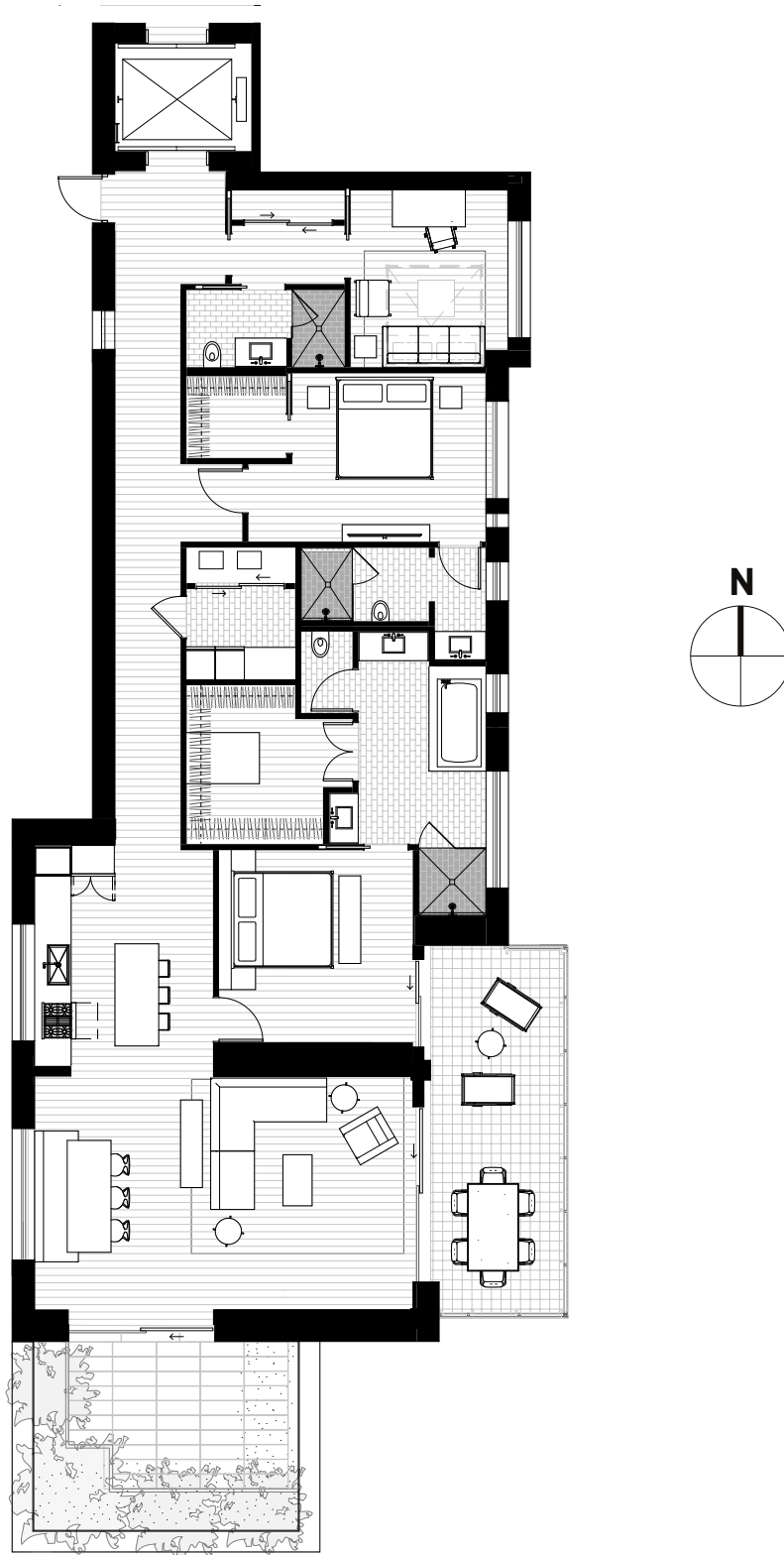
NOIR COLOR SCHEME

Saint Cecilia Residence 401

1,890 SF (INTERIOR) + 100 SF (TERRACE) | 2 BEDROOMS, 2 BATHS



Exclusive Sales & Marketing by DEN Property Group LLC. The materials, designs, square footages, features and amenities depicted by artist's or computer rendering are subject to change and no guarantee is made that the project or the condominium units will be of the same size or nature as depicted or described. Floor plans are not to scale, dimensions are approximate, and may vary from the description of the unit in the condominium declaration. Materials are based on photographic representation and are illustrative. You should review the actual materials at the sales office prior to making your finish selections. Furnishings shown in the photographs are not included. Certain images are based on photos or digital representations and have been artistically assembled and/or retouched. Views may change based on development or other factors. Changes may be made in the building or designs used in the project. The materials, designs, features and amenities depicted by artistic or computer renderings are subject to change. Pricing and availability are subject to change without notice. For information about brokerage services and consumer protection notice, visit <https://goo.gl/ZDjb8c>



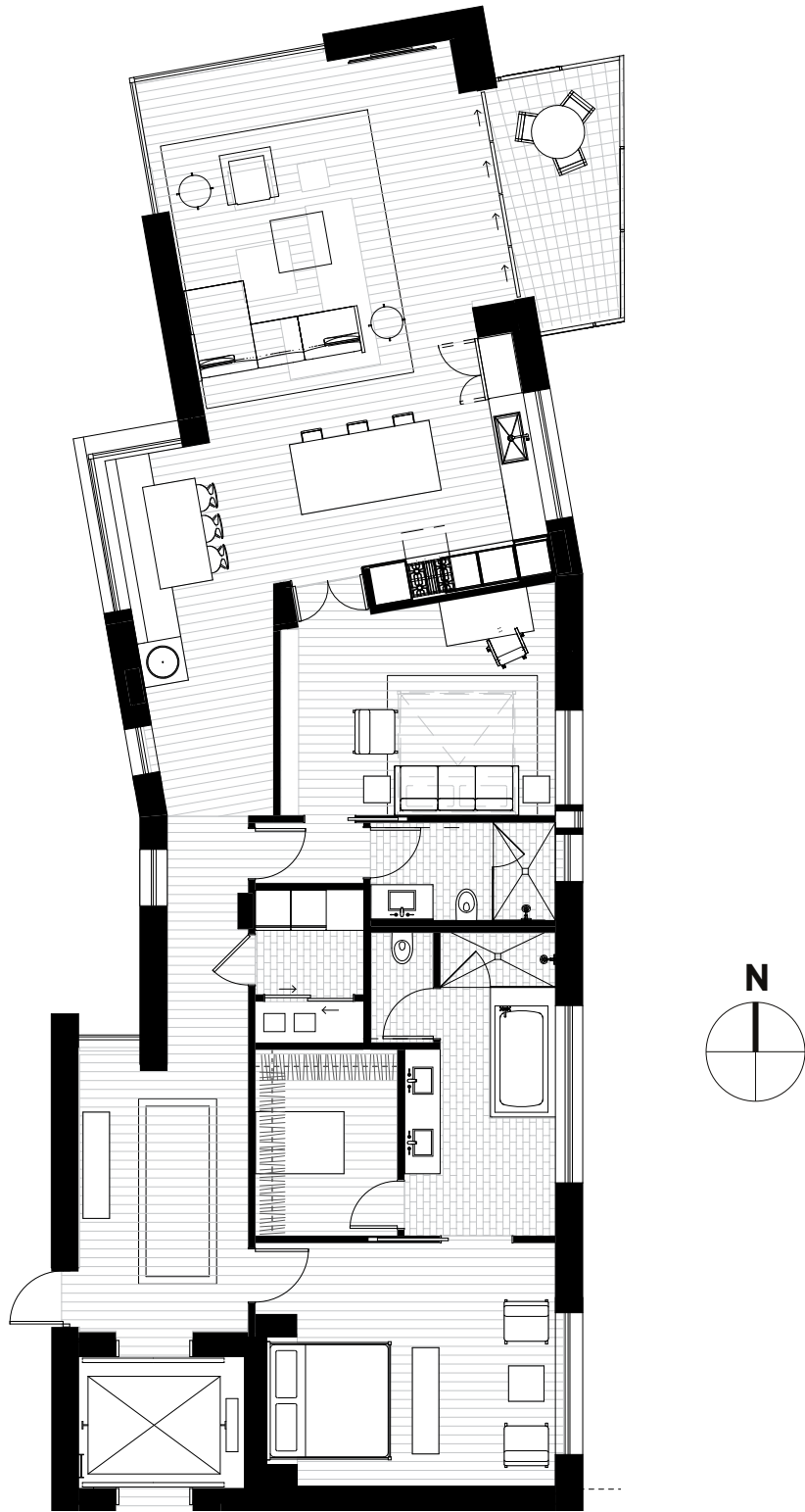
PISCINE COLOR SCHEME

Saint Cecilia Residence 402

2,180 SF (INTERIOR) + 270 SF (TERRACE) | 3 BEDROOMS, 3 BATHS



Exclusive Sales & Marketing by DEN Property Group LLC. The materials, designs, square footages, features and amenities depicted by artist's or computer rendering are subject to change and no guarantee is made that the project or the condominium units will be of the same size or nature as depicted or described. Floor plans are not to scale, dimensions are approximate, and may vary from the description of the unit in the condominium declaration. Materials are based on photographic representation and are illustrative. You should review the actual materials at the sales office prior to making your finish selections. Furnishings shown in the photographs are not included. Certain images are based on photos or digital representations and have been artistically assembled and/or retouched. Views may change based on development or other factors. Changes may be made in the building or designs used in the project. The materials, designs, features and amenities depicted by artistic or computer renderings are subject to change. Pricing and availability are subject to change without notice. For information about brokerage services and consumer protection notice, visit <https://goo.gl/ZDjb8c>



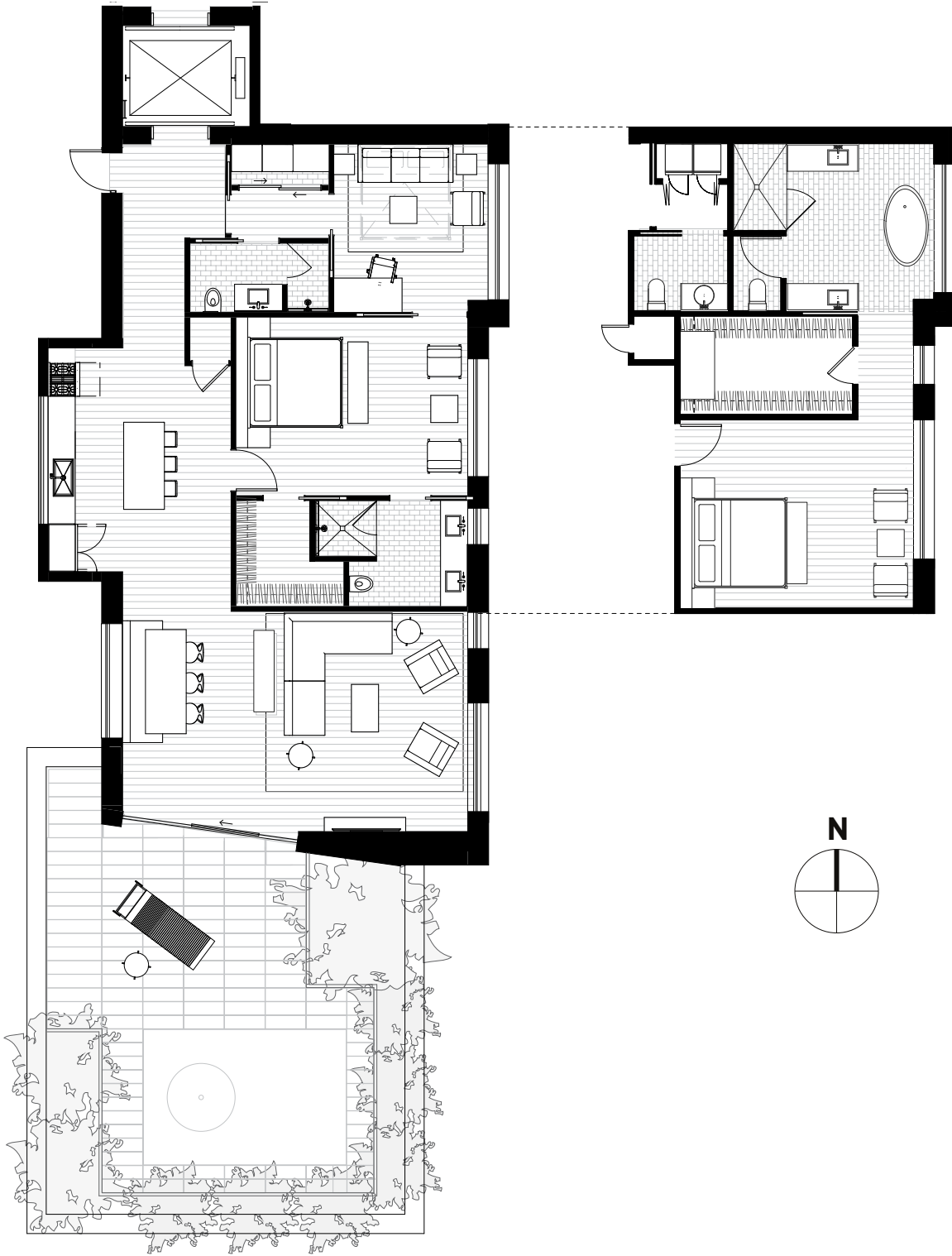
NOIR COLOR SCHEME

Saint Cecilia Residence 501

1,865 SF (INTERIOR) + 100 SF (TERRACE) | 2 BEDROOMS, 2 BATHS



Exclusive Sales & Marketing by DEN Property Group LLC. The materials, designs, square footages, features and amenities depicted by artist's or computer rendering are subject to change and no guarantee is made that the project or the condominium units will be of the same size or nature as depicted or described. Floor plans are not to scale, dimensions are approximate, and may vary from the description of the unit in the condominium declaration. Materials are based on photographic representation and are illustrative. You should review the actual materials at the sales office prior to making your finish selections. Furnishings shown in the photographs are not included. Certain images are based on photos or digital representations and have been artistically assembled and/or retouched. Views may change based on development or other factors. Changes may be made in the building or designs used in the project. The materials, designs, features and amenities depicted by artistic or computer renderings are subject to change. Pricing and availability are subject to change without notice. For information about brokerage services and consumer protection notice, visit <https://goo.gl/ZDjb8c>



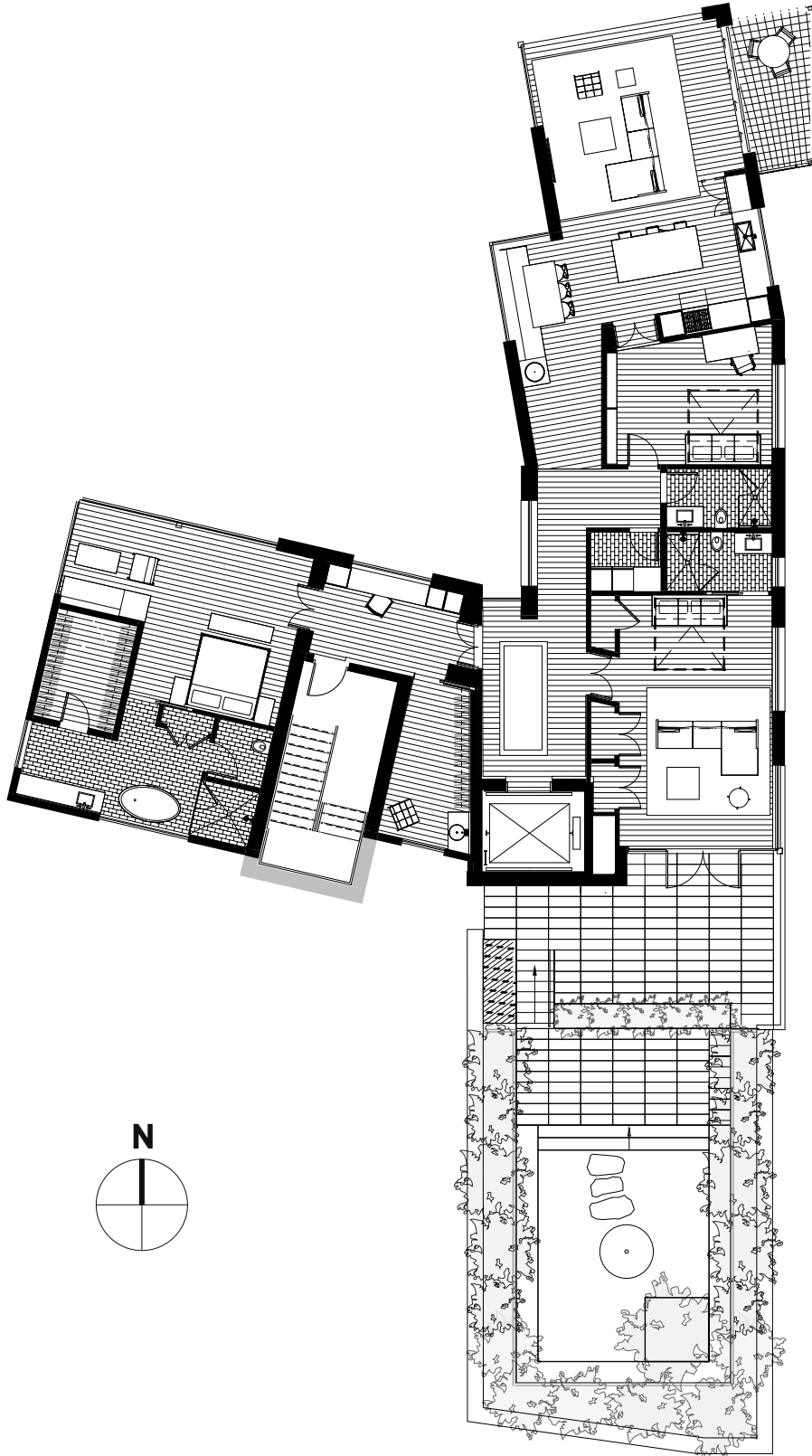
NOIR COLOR SCHEME

Saint Cecilia Residence 502

1,490 SF (INTERIOR) + 815 SF (TERRACE) | 2 BEDROOMS, 2 BATHS | ALTERNATE: 1 BEDROOM, 1.5 BATH



Exclusive Sales & Marketing by DEN Property Group LLC. The materials, designs, square footages, features and amenities depicted by artist's or computer rendering are subject to change and no guarantee is made that the project or the condominium units will be of the same size or nature as depicted or described. Floor plans are not to scale, dimensions are approximate, and may vary from the description of the unit in the condominium declaration. Materials are based on photographic representation and are illustrative. You should review the actual materials at the sales office prior to making your finish selections. Furnishings shown in the photographs are not included. Certain images are based on photos or digital representations and have been artistically assembled and/or retouched. Views may change based on development or other factors. Changes may be made in the building or designs used in the project. The materials, designs, features and amenities depicted by artistic or computer renderings are subject to change. Pricing and availability are subject to change without notice. For information about brokerage services and consumer protection notice, visit <https://goo.gl/ZDjb8c>



PISCINE COLOR SCHEME

Saint Cecilia Residence Penthouse

2,710 SF (INTERIOR) + 100 SF (TERRACE) | 3 BEDROOMS, 3 BATHS



Exclusive Sales & Marketing by DEN Property Group LLC. The materials, designs, square footages, features and amenities depicted by artist's or computer rendering are subject to change and no guarantee is made that the project or the condominium units will be of the same size or nature as depicted or described. Floor plans are not to scale, dimensions are approximate, and may vary from the description of the unit in the condominium declaration. Materials are based on photographic representation and are illustrative. You should review the actual materials at the sales office prior to making your finish selections. Furnishings shown in the photographs are not included. Certain images are based on photos or digital representations and have been artistically assembled and/or retouched. Views may change based on development or other factors. Changes may be made in the building or designs used in the project. The materials, designs, features and amenities depicted by artistic or computer renderings are subject to change. Pricing and availability are subject to change without notice. For information about brokerage services and consumer protection notice, visit <https://goo.gl/ZDjb8c>